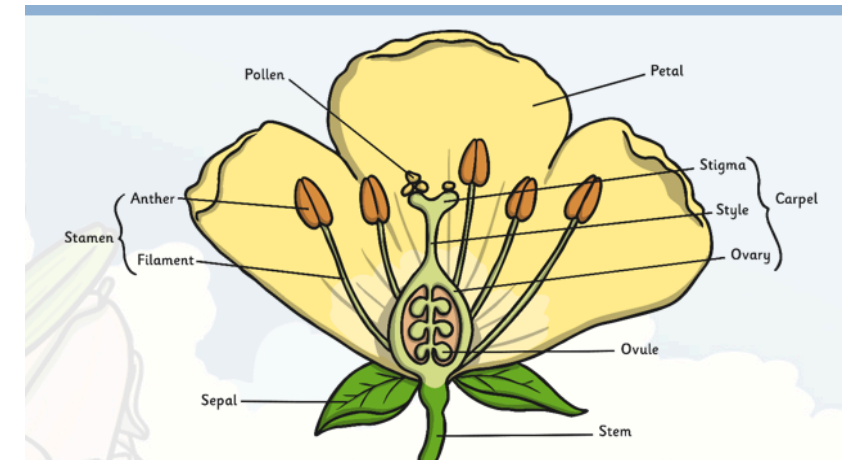
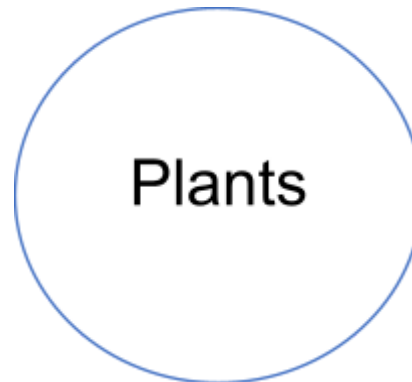
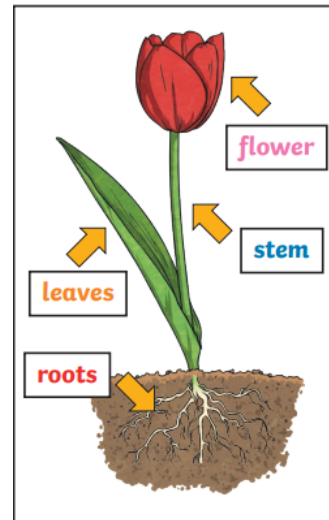
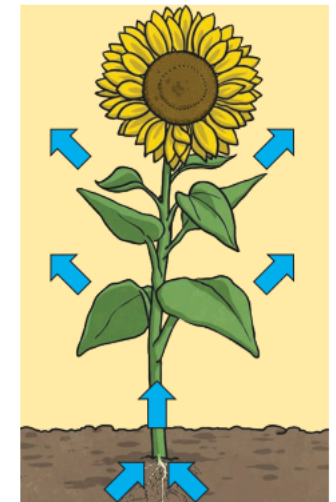


Roots	Anchor the plant to the ground. Helps the plant to absorb nutrients and water from the soil.
Stem	Holds the plant upright. Helps transport water and nutrients to other parts of the plant.
Trunk	Only trees have these. They act like a stem and transport water and nutrients to other parts of the tree.
Leaves	Help to make food for the plant.
Flowers	Make seeds to grow into new flowers. The petals attract insects to the plant.
nutrients	Substances needed by a living thing to survive. Plants get their nutrients from soil.
Seed dispersal	Where seeds are spread far away from the parent plant so new ones can grow. Seeds are often spread by the wind or from animals brushing up against them and transporting them elsewhere on their fur.
pollination	The process of transferring pollen from plant to plant.
transported	Moved around the plant.
temperature	How warm or cold something or somewhere is. Some plants prefer cooler temperatures whereas others prefer warmer temperatures.



### How Water Moves through a Plant

1. The **roots** absorb water from the soil.
2. The **stem** transports water to the **leaves**.
3. Water **evaporates** from the **leaves**.
4. This **evaporation** causes more water to be sucked up the **stem**.



The water is sucked up the **stem** like water being sucked up through a straw.

### What do plants need to grow?

Water    Light    Room to grow    Air    Nutrients from the soil

