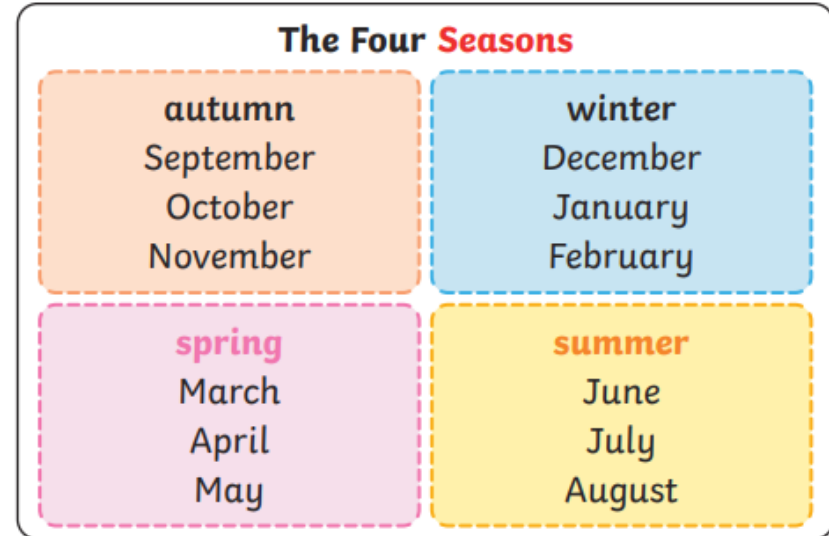
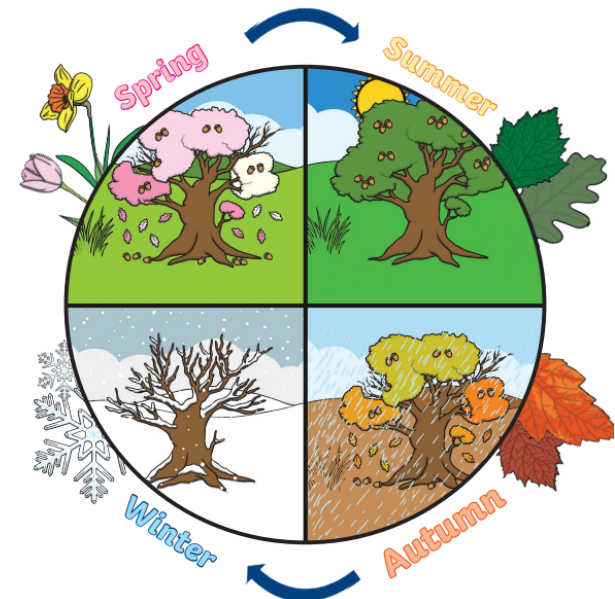


The four seasons of the year

| Key Vocabulary | |
|-----------------|--|
| seasons | In the UK, there are four seasons each year. They are autumn, winter, spring and summer . |
| spring | In spring , the weather starts to get warmer. Leaves begin to grow and some trees may blossom (have flowers). Days start to have more daylight hours. |
| summer | In summer , the weather gets hotter. Days in summer have the most daylight hours. Trees are full of leaves and there are lots of flowers, bees, butterflies and other insects. |
| weather | The weather includes the temperature outside, how windy it is and rainfall (how much it rains). We can also describe cloud, snow and sun. |
| daylight | Daylight is when it is light outside. The amount of daylight changes with each season. |



| Month | Sept | Oct | Nov | Dec | Jan | Feb | Mar | Apr | May | June | July | Aug |
|--------------------------|------|-----|-----|-----|-----|-----|-----|-----|-----|------|------|-----|
| Hours of Daylight | 13 | 11 | 9 | 8 | 8 | 10 | 12 | 14 | 15 | 16 | 16 | 14 |



Weather

| Key Vocabulary | |
|-----------------------|--|
| seasons | The year is divided into four seasons : spring, summer, autumn and winter. |
| observations | What you notice when you look carefully at something. |
| record | Keep information about something that has happened, e.g. in writing or pictures. |
| temperature | A measure of how hot or cold something is. |
| thermometer | An instrument used to measure temperature . |
| United Kingdom | Made up of England, Northern Ireland, Scotland and Wales. Sometimes known as the UK. |
| affects | Makes a difference to. |

Our Weather

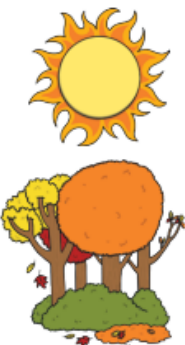
The weather in the **United Kingdom** can change from day to day. The four **seasons** have particular weather patterns. You could keep a weather diary by measuring the **temperature** (using a **thermometer**) and **recording** your **observations**.



Seasonal Changes



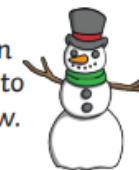
There are changes in weather in each **season**. In spring, it is often rainy and the **temperature** begins to get warmer.



In summer, the sun is much stronger. The **temperature** is warmer than in any other **season**.

In the autumn, the weather turns chillier, windier and there is often rain.

In the winter, it is often cold and frosty. It has to be freezing cold to snow.



How the Weather Affects Us

The weather **affects** what we do and what we wear. If it is rainy, we wear **waterproof** clothes when we go outside.



If it is hot, we need to wear sun cream and a sun hat.

